



LP MOTORCYCLE • AGM BATTERY

LTX7A-BS (12V 6Ah)

DIN: 50615

22/02/2024

Description

The motor battery LTX7A-BS, 12 volt, 6 Ah, is a starter battery with AGM technology. The LTX7A-BS is dry pre-charged and comes with a fitting acid pack. This lead-acid battery is, after filling and charging, 100% maintenance free and leak-proof. Can be installed in tilted position up to 45°. The LTX7A-BS is a real allrounder and suitable for seasonal use and short distances.

Performance

Rated Voltage	12
Nominal Capacity	6Ah (10hr)
CCA EN	105

Dimensions / Weight

Dimensions	Length	150 mm
	Width	87 mm
	Container Height	93 mm
	Total Height	93 mm
Net. Weight	2.35 Kg	
Weight acid	0.45 Kg	
Terminal	F	
Layout	1	

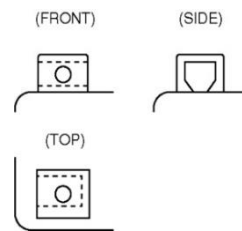


Features

- Absorbent Glass Mat technology
- Advanced starting power
- Excellent vibration resistant
- 100% maintenance free once activated

Layout

Terminal



(Note) All above information shall be changed without prior notice, Landport Batteries reserves the right to explain and update the latest information.