



Description

The motor battery LTX12-4, 12 volt, 10 Ah, is a starter battery with AGM technology. The LTX12-4 is already factory activated (filled and charged) and therefore ready to use at delivery. This lead-acid battery is leak-proof and maintenance free. Can be installed in tilted position up to 90°. The LTX12-4 is a real allrounder and suitable for seasonal use and short distances.

Performance

| | |
|------------------|-------------|
| Rated Voltage | 12 |
| Nominal Capacity | 10Ah (10hr) |
| CCA EN | 180 |

Dimensions / Weight

| | | |
|-------------|------------------|--------|
| Dimensions | Length | 150 mm |
| | Width | 87 mm |
| | Container Height | 130 mm |
| | Total Height | 130 mm |
| Net. Weight | 3.5 Kg | |
| Weight acid | 0.79 Kg | |
| Terminal | F | |
| Layout | 1 | |

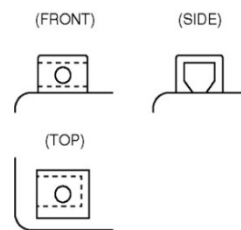
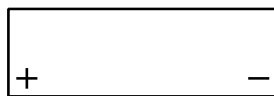


Features

- Absorbent Glass Mat technology
- Advanced starting power
- Excellent vibration resistant
- 100% maintenance free
- Factory activated, ready to use!

Layout

Terminal



(Note) All above information shall be changed without prior notice, Landport Batteries reserves the right to explain and update the latest information.