



LTX7-3 (12V 6Ah)

Description

The motor battery LTX7-3, 12 volt, 6 Ah, is a starter battery with AGM technology. The LTX7-3 is already factory activated (filled and charged) and therefore ready to use at delivery. This lead-acid battery is leak-proof and maintenance free. Can be installed in tilted position up to 90°. The LTX7-3 is a real allrounder and suitable for seasonal use and short distances.

Performance

Rated Voltage	12
Nominal Capacity	6Ah (10hr)
CCA EN	100

Dimensions / Weight

Dimensions	Length	113 mm
	Width	70 mm
	Container Height	130 mm
	Total Height	130 mm
Net. Weight	2.31 Kg	
Weight acid	0.43 Kg	
Terminal	F	
Layout	0	

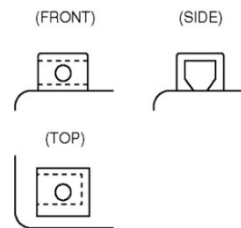


Features

- Absorbent Glass Mat technology
- Advanced starting power
- Excellent vibration resistant
- 100% maintenance free
- Factory activated, ready to use!

Layout

Terminal



(Note) All above information shall be changed without prior notice, Landport Batteries reserves the right to explain and update the latest information.